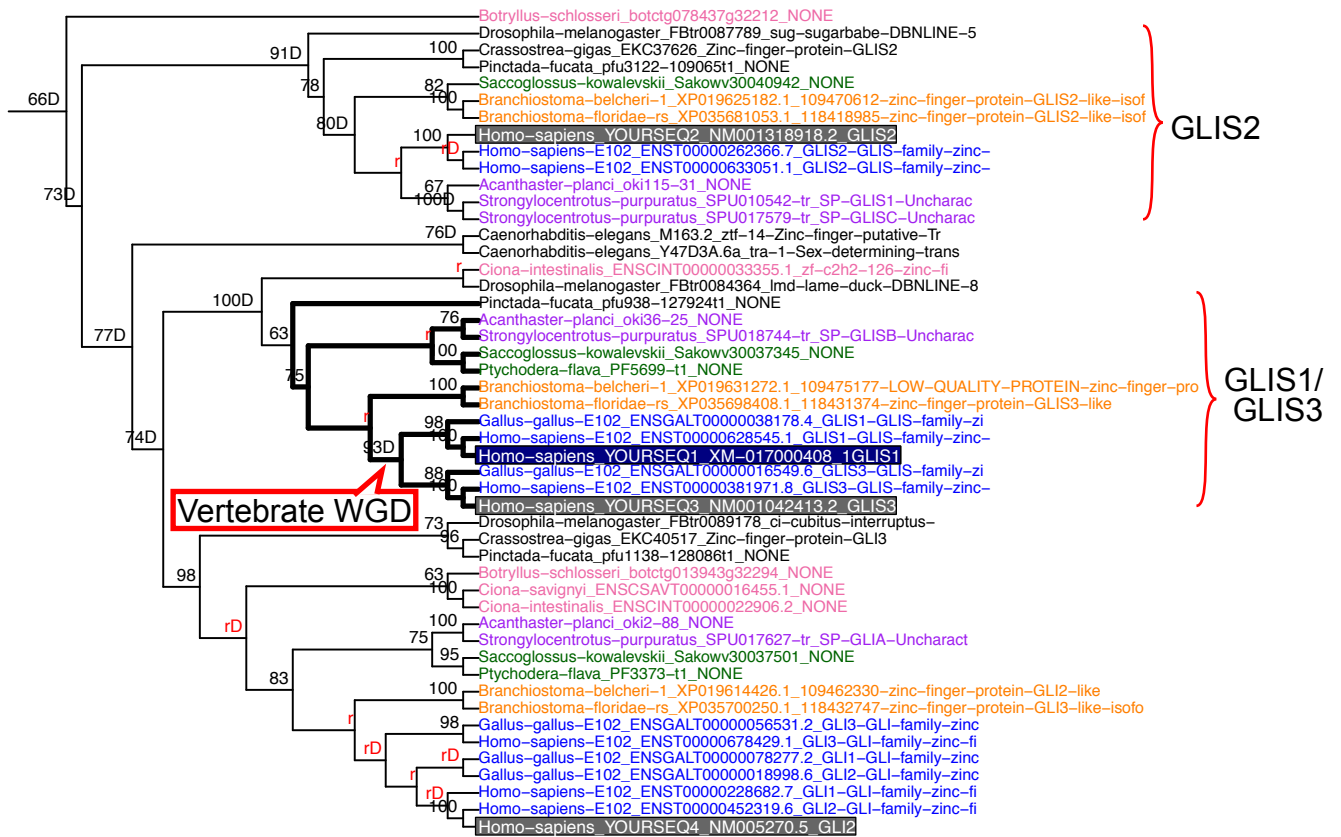


Evolutionary history of 3 GLIS genes



020_treeRearranged.pdf

GLIS1 and GLIS3 originated during vertebrate whole genome duplication (WGD), whereas GLIS2 is a sister group to GLIS1/3. Namely, this result indicates that as the first step, future reprogramming studies should focus on GLIS1/3 rather than on GLIS2.